



**The 2019 Newport Regatta®  
2019 12 Metre Pre-Worlds**

**July 6-7, 2019  
Newport, RI**

**Ida Lewis Yacht Club and Sail Newport**  
HOST

**Sail Newport**  
ORGANIZING AUTHORITY

**Newport, Rhode Island, USA.  
July 6-7, 2019**

**1. RULES:**

- 1.1 The Regatta will be governed by the rules as defined in the *Racing Rules of Sailing* (RRS).
- 1.2 ITMA/12 Metre Class By-Laws & Regulations as of July 2, 2008, updated November 11, 2011 and the ITMA/12 Metre Class Rule as of November 1, 2018 and any subsequent amendments.
- 1.3 The Equipment Rules of Sailing ("ERS") shall apply.
- 1.4 If there is a conflict between languages, the English text shall take precedence.
- 1.5 The Protest Committee may impose suitable penalties at its own discretion, other than disqualification for violations of the Class Rules, or other non Part I or Part II rules of the RRS.
- 1.6 A boat touching the Race Committee signal boat or the buoy(ies) attached to the signal boat at any time will be DSQ without a hearing. This changes RRS 63.1, A4, A5 and A11.
- 1.7 In the event that a crew member falls overboard and is no longer connected to the yacht, she shall:
  - a) retire from the race
  - b) notify the Race Committee on the fleet VHF Ch 72 that she has a man overboard
  - c) her score in this case shall be equal to the number of starters for that race without a hearing. The scoring abbreviation will be MOBThis changes RRS 63.1, A4, A5 and A11. However, her obligations as per RRS 1.1 are not changed.
- 1.8 US Sailing prescriptions will not apply

- 2. NOTICE TO COMPETITORS** - Notices to competitors will be posted on the official notice board located on the south deck of the Sail Newport main building.

### **3. CHANGES TO SAILING INSTRUCTIONS**

- 3.1. Any change to the Sailing Instruction will be posted before 0830 on the day it will take effect, except
- 3.2 Any change to the schedule of races will be posted by 2000 on the day before it will take effect.

### **4. SIGNALS MADE ASHORE**

- 4.1 Signals made ashore will be displayed from the flagpole at Sail Newport.
- 4.2 When flag "AP" is displayed ashore, "1 minute" is replaced with "not less than 60 minutes" in race signal "AP".

### **5. SCHEDULE OF RACES**

- 5.1 Rendezvous signal announced on VHF Ch 72 at 0900 each day.
- 5.2 Course Signals 1055 each day.
- 5.3 First warning signal 1100 each day.
- 5.4 No more than three (3) races will be sailed on any one day.
- 5.5 On Sunday July 7<sup>th</sup>, no warning signal will be made after 1500 hrs. The warning for a start following one or more general recalls or for subsequent starts may be made after 1500.

### **6. CLASS FLAGS** – Class flags shall be flown from the backstay or running backstay approximately six (6) feet above the deck.

Division A - Grand Prix	Numeral Pennant 1
Division B - Modern	Numeral Pennant 2
Division C - Traditional	Numeral Pennant 3
Division D – Vintage	Numeral Pennant 4

### **7. RACING AREA**

- 7.1 Races will be held on the waters of Narragansett Bay or Rhode Island Sound.
- 7.2 The Rendezvous area will be signaled at 0900 each day from the flagpole at Ida Lewis Yacht Club and announced on VHF Channel 72 .
- 7.3 Rendezvous Areas are as follows (see Attachment A):
  - Area A – -in the vicinity of 120° M for 2.5 NM from R "2".
  - Area B – in the vicinity of G "7" QG off Quonset Point.

### **8. THE COURSES**

- 8.1 The courses will be windward-leeward courses. See Attachment B.
- 8.2 The number of legs, and the approximate heading of and distance to the first mark will be displayed on a white board on the Race Committee Signal Boat no later than the warning signal. For the purpose of SI 8.2 only the distance between the weather mark and the offset will not be counted as a leg.
- 8.3 Marks, including the windward offset mark, shall be rounded in order and always left to port, except that a gate, when used, shall be rounded as described in rule 28.2(c).
- 8.4 A gate mark may be set as the Leeward Mark.
- 8.5 The leeward mark will be approximately 0.1 NM to windward of the starting line.

### **9. MARKS**

- 9.1 Rounding marks will be orange tetrahedrons. The offset mark shall be an orange sphere.
- 9.2 A new mark, as provided for in SI 11.1 will be a yellow tetrahedron.
- 9.3 The starting pin-end mark will be a green mark, or a staff displaying an orange flag on an anchored Race Committee pin boat at the port end of the starting line.

9.4 The finish pin-end mark will be a red mark.

## **10. THE START**

- 10.1 Races will be started in accordance with rule 26.
- 10.2 The starting line will be between a staff displaying an orange flag on the Race Committee Signal Boat at the starboard end and course side of the port-end starting mark or a staff displaying an orange flag on an anchored Race Committee pin boat at the port end of the line.
- 10.3 A boat starting later than 5 minutes after her starting signal will be scored Did Not Start without a hearing. This changes rules A4 and A5.
- 10.4 Boats whose warning signal has not been made shall keep clear of the starting area.
- 10.5 The Race Committee will endeavor to hail each premature starter over VHF Ch 72. Failure to make such an announcement, the number of times an announcement is made, or the order in which a particular boat is hailed shall not be grounds for redress. This changes rule 62.1 (a).
- 10.6 If there is a significant wind shift during a series of starting sequences, the Race Committee may signal a change of course for a class as follows: "At the preparatory signal, Flag C will be displayed with numerous sound signals, and remain displayed until the starting signal. The signaled class will sail to the change mark". This changes RRS 27.1 and 33.

## **11. CHANGE OF THE NEXT LEG OF THE COURSE**

- 11.1 In addition to the requirements of rule 33, to change the next leg of the course, the race committee will lay a new mark (or move the finishing line) and remove the original mark as soon as practicable. When, in a subsequent change a new mark is replaced, it will be replaced with an original mark.
- 11.2 If the weather mark is moved after the first leg of a race, then there will be an offset set for that or any subsequent leg of the race.

## **12. THE FINISH**

- 12.1 The finish line will be between a staff displaying an orange flag on the Race Committee Boat and the course side of the pin-end finishing mark.
- 12.2 The finish line Race Committee Boat will notify each boat by VHF Ch 72 after they finish if there will be no more racing that day.

## **13. PENALTY SYSTEM –**

The Scoring Penalty, RRS 44.3 will apply. The penalty will be two (2) places. However, when a yacht may have broken RRS 31 but not a Rule of Part 2 in the same incident, the penalty will be one (1) place.

## **14. TIME LIMITS**

- 14.1 The time limit for the first boat in a class to complete the course in a race is 3 hours.
- 14.2 Any boats failing to finish within 30 minutes of the first boat in her class to sail the course and finish will be scored TLE without a hearing. A boat scored TLE shall receive points equal to the number of boats that finished within the 30 minute window for that race plus one. This changes Rules 35.1, A4.1 and A5.

## **15. PROTESTS AND REQUESTS FOR REDRESS**

- 15.1 Protest forms will be available from the Jury Desk at Sail Newport. Protests and requests for redress shall be delivered to the Jury Desk within the appropriate time limit.
- 15.2 The protest time limit is one (1) hour after the Race Committee Signal Boat docks after the last race of the day. The protest time limit will be posted on the official notice board.

- 15.3 Notices will be posted no later than 30 minutes after the protest time limit to inform competitors of hearing in which they are parties or named as witnesses. Hearings will be held in the regatta protest room at Sail Newport. Representatives of boats who are parties to a hearing shall remain on call in the vicinity of the protest room. Failure of a boat to appear when called for a hearing will be considered by the Jury as grounds for proceeding under rule 63.3(b).
- 15.4 A boat shall report and receive acknowledgement of its intention to protest and the yacht being protested immediately after the finish of the race to the Race Committee by radio on VHF Ch 72. This changes RRS 61.1
- 15.5 A list of boats that accepted a scoring penalty will be posted on the Official Notice Board at Sail Newport.
- 15.6 Rule 63.5 is changed by adding — "A protest involving contact may be heard by the Jury even though the requirements of rule 61.1(a) and 61.3 have not been fulfilled."
- 15.7 Penalties, if any, for breaches of rules other than rules of Part 2 may be less than disqualification, if the Jury so decides.
- 15.8 Breaches of SIs 17 and 19 will not be grounds for a protest by a yacht. This changes rule 60.1(a).
- 15.9 On the last day of racing a request for redress based on a jury decision shall be delivered no later than 30 minutes after the decision was posted. This changes RRS 62.2.

## **16. SCORING**

- 16.1 The Low Point scoring system of Appendix A will apply.
- 16.2 A boat's series score shall be the total of all her race scores. This changes RRS A2.
- 16.3 One (1) completed races for each division will constitute a regatta.

## **17. SAFETY REGULATIONS**

- 17.1 Check In – prior to the first warning of each day all yachts shall check in the Race Committee by hailing them on VHF Ch 72 and reporting their number and name until acknowledged.
- 17.2 A yacht that retires shall notify the Race Committee as soon as possible.
- 17.3 In the event that life saving equipment is lost overboard, it should be retrieved. If recovery is impossible, loss of any equipment that floats shall be reported immediately to the Race Committee and to the nearest U.S. Coast Guard station on VHF Ch 16.

**18. SUPPORT BOATS** - Support boats shall stay outside of a 100 yard radius of any boat that is racing.

## **19. RADIO COMMUNICATIONS**

- 19.1 Except in an emergency, a boat shall neither make radio transmissions while racing nor receive radio communications not available to all boats. This restriction also applies to mobile telephones and any other wireless device.
- 19.2 From one hour prior to the scheduled first warning of the day until a boat has finished racing for the day, it may not receive weather, current, or navigational information except from a publicized source available at no cost to all competitors. Subscription, password protected or restricted access web pages are considered private information and may not be used for the transmission or reception of specialized weather information.
- 19.3 General use of the Internet and publicly available web sites to obtain weather including all National Weather Service data is authorized. Weather data developed specifically for the Race may not be received while racing.
- 19.4 The race committee will utilize VHF Ch 72 for communications with competing boats for race information, recalls, change of course, etc. Failure to do so shall not be grounds for seeking redress.

**20. PRIZES** - As per the Notice of Race

## **21. NOTES**

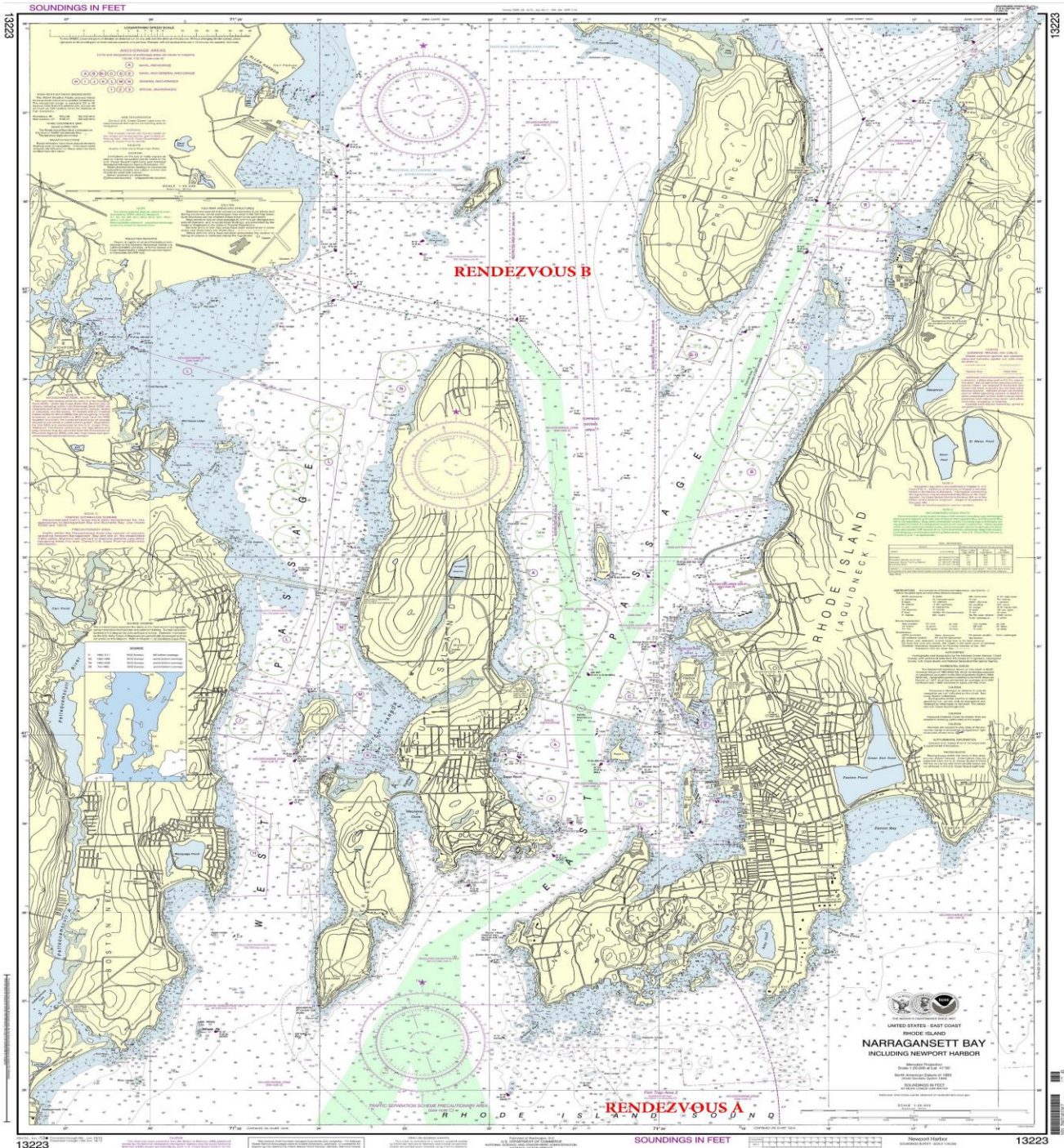
- 21.1 Competitors are reminded that Narragansett Bay is a restricted channel and sailing vessels do not have right of way over a vessel under power which may be restricted in her ability to maneuver.
- 21.2 In the event there is racing in Narragansett Bay, competitors should be aware of heightened security around the Navy base in Newport just to the north of the Newport Jamestown Bridge. The area to the along the coast of the Naval Facilities from Coasters Harbor to the breakwater at the north end of Coddington Cove marked by a series of white buoys shall rank as an obstruction. Yachts shall not enter this area.

**22. DISCLAIMER OF LIABILITY** - Competitors participate in the regatta entirely at their own risk. See RRS 4, Decision to Race. The Organizing Authority, the 12 Metre Class and any sponsors will not accept any liability for material damage or personal injury or death sustained in conjunction with or prior to, during, or after the regatta Attention is also drawn to WS Offshore Special Regulation 1.02, Responsibility of the Person in Charge, as well as the "Waiver and Release of Liability".

**23. MEDIA RELEASE:** Competitors and crew members on the competing yachts grant, at no cost, to ITMA, the 12M Americas Fleet, Inc., Ida Lewis Yacht Club, Sail Newport, sponsors and affiliated companies the absolute right and permission to use their name, voice, image, likeness, biographical material and representations of the boats in any media World-wide (including but not limited to television, video, print and electronic media), for the purposes of advertising, promoting, reporting and disseminating information.



# ATTACHMENT A RENDEZVOUS AREAS



13223 13223

SOUNDINGS IN FEET

RENDEZVOUS A

RENDEZVOUS B

NARRAGANSETT BAY INCLUDING NEWPORT HARBOR

RHODE ISLAND

UNITED STATES - EAST COAST

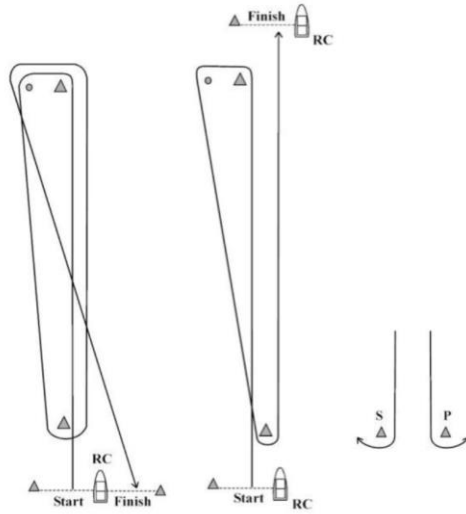
SOUNDINGS IN FEET

Newport Harbor

13223

## ATTACHMENT B COURSE DIAGRAMS

Course "W"



EVEN # of Legs

ODD # of Legs

### COURSE NOTES

1. No later than the warning signal, the Race Committee will signal the course designation, and distance and bearing to the windward mark on a white board on the starboard side of the Race Committee Signal Boat.
2. Course "W" is a Windward/Leeward course with a windward offset mark and the initial leeward mark located approximately 0.10 NM to weather of the starting line.
3. A gate mark may be used as the leeward mark.
4. Marks, including the windward offset mark, shall be rounded in order and always left to port, except that a gate, when used, shall be rounded as described in rule 28.2(c)

## 2019 Newport Regatta Sponsors

